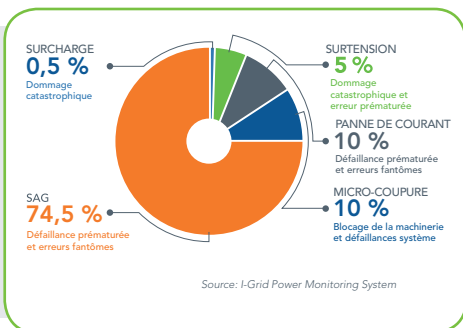


InnovoltPro

Groundbreaking power protection and data analytics technologies proven to reduce service calls and increase uptime for high volume Office and Production environments.

While incidents caused by power disturbances are not covered by standard maintenance agreements, the InnovoltPro Series keeps your production level equipment up and running by providing an additional, comprehensive layer of protection that remediates the impact of damaging power disturbances before they can be harmed. This solution helps your business produce more jobs in-house and improve profitability.



INDUSTRY-LEADING CORE PROTECTION

- Patented Core Protection of the 5 major power disturbances, including protection against Voltage Sags and resulting damaging current inrush
- Superior protection of connected equipment; AC Line, Tele/Fax, Network Surge Protection

ENHANCED POWER PROTECTION (P2500)

- Gigabit Network Surge Protection
- Filtering of High Frequency Neutral to Ground and EMI/RFI Line
- Neutral Earth Voltage Detection

COMBINED WITH DATA ANALYTICS

- Power Disturbance Data Collection with Power Doctor Plus Smartphone Adapter (no need for additional hardware)
- Disturbance Event Recording / Date & Time Stamping (P2500)
- Cloud-Based Dashboard enables users to view aggregated fleet-wide power data in a centralized location (no need to view each separate machine)
- Download reports to correlate power anomalies with error codes
- Customizable Email Alerts for around the clock power profile analysis



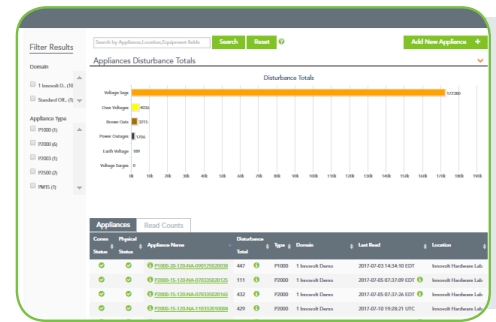
INNOVOLTPRO BENEFITS FOR YOUR BUSINESS

- Increased productivity, equipment reliability and lifespan
- Reduced service calls; fewer truck rolls
- Visibility and control with fleet-wide management

DATA INSIGHTS TO INCREASE EFFECTIVENESS

The InnovoltPro solution automatically records the occurrence of power anomalies. Technicians can access this data via optical reads utilizing our Smartphone apps and readers (no laptops or separate boxes required!). On site, technicians can become more effective by

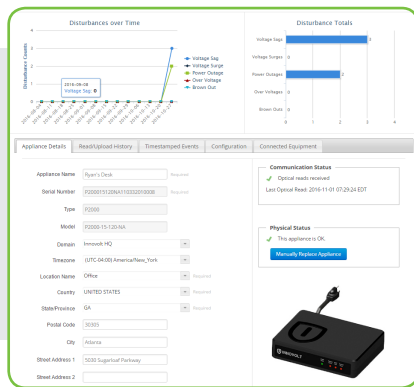
- Determining or eliminating power as a cause of issues
- Providing their customers with data that conclusively show power as an issue



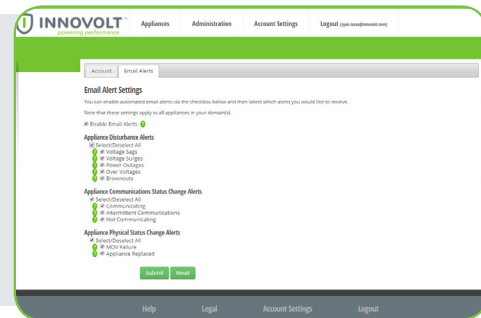
Main Fleet View

Innovolt's power profile data is also collected in the Innovolt Management Cloud (IMC), which serves as a central aggregation point of data, analytics and control. No other power protection company provides this capability to view and analyze data on a fleetwide basis. From the IMC, service managers and dispatchers can:

- Run initial diagnostics before dispatching a technician,
- Correlate service requests or outages with disturbances,
- Identify trends in service requests or outages due to disturbances, and
- Proactively predict future breakdowns due to certain kinds and frequency of disturbances instead of reacting.



Appliance Details



Customizable Email Alerts

MODELS

Katun PN: 48502

Katun PN: 39210 (L) / 39523 (NL)

InnovoltPro P2500-208

- Date and Time Stamping
- High Frequency EMI/RFI Noise Filter
- Neutral Earth Voltage Detection
- High Frequency Neutral to Ground Filter

SPECIFICATIONS:

TEL / DATA:

PARAMETER	TEL	DATA
Connector	RJ11	RJ45
Clamping Voltage	180V	8.5V
Protected Lines	3-4	1-2, 3-6, 4-5, 7-8

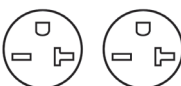
ELECTRICAL:

PARAMETER	P2500-20-208
Nominal Operating Voltage	208/240 Vac, 60 Hz
Over Voltage Limit	>288 Vac
Under Voltage Limit	<156 Vac
Maximum Continuous Current	20 A
Voltage Surge per UL 1449	1000 Vac L-N
	800 Vac L-G
	800 Vac N-G

PLUG:



RECEPTACLES:



InnovoltPro PM30

- Production Level
- Locking and Non-Locking Plugs

SPECIFICATIONS:

TEL / DATA:

PARAMETER	TEL	DATA
Connector	RJ11	RJ45 (CAT5E)
Clamping Voltage	230 Vac - 250Vac	5 Vac - 15 Vac
Protected Lines	L1 - G / L2 - G	ALL

ELECTRICAL:

PARAMETER	PM30-240L / PM30-240N
Nominal Operating Voltage	240 Vac, 60 Hz
Over Voltage Limit	> 288 Vac
Under Voltage Limit	< 180 Vac
Maximum Continuous Current	30A
Voltage Surge per UL 1449	1000 Vac L-N
	800 Vac L-G
	800 Vac N-G

NON-LOCKING:



LOCKING:

